

Manntree®
— Paint My Love —

Manntree Paint Co.,Ltd.
Tel: +44-20-32390208
Web: www.manntree.co.uk



Headquarters :
3rd Floor, No.207 Regent
street, London, United Kingdom

Design by Manntree in United Kindom



William Onyx

Favor of the british royal family

www.manntree.co.uk

Manntree®
— Paint My Love —

STYLISH
HOUSE
FOR
ENVIRONMENTAL
LIFESTYLE

Manntree Group

HMG Group is well versed in the needs of the British royal family, (Manntree Group), in order to continue the feedback of this kind of stone on the wall, and still retain the pure low-key luxury. Royal white jade-William (William Onyx), its surface is as smooth as a mirror, the texture is looming, and it has incomparable luster. It represents the British royal family’s dedication to high quality and luxury, as well as Prince William’s noble and paranoid choice. No compromise on quality.



William Onyx

In 2021, the British royal family tendered Prince William’ s palace for repairs. For this purpose, HMG Group invested two laboratories and staff to cooperate with royal designers to conduct research and development bids. If the product can be selected, this product can be honored by the British royal family. With the special product badge, Manntree Groud can introduce products exclusively for the British royal family for the first time.

Main ingredients	Purified water, edible beeswax, nano-level acrylic resin.
Characteristics	Water-based interior wall material, very suitable for traditional building materials and plastering.
Features	Manufactured under the auspices of ISO 9001:2015 quality and environmental management system. ①Smooth hand, high-quality jade look. ②The gloss of the base material: Carrara white jade color. ③Marble material: It has a similar background with the native British Carrara jade, and they can also have good luster and a variety of charming colors. ④After a special instrument test, it has incomparable gloss and continuous gloss retention.
Base requirements	①The base surface of cement mortar needs to be maintained for more than 6 days, and the PH is less than 11 degrees ②Please give priority to using water-resistant putty, you can directly apply after leveling, sanding, and dust removal ③The mortar base needs to be leveled and polished with putty powder, and the alkaline putty needs to be maintained for about 15 days ④Existing lime coating: The surface must be clean and free of grease. Remove all scattered flaky lime water. Loose plaster or mortar should be replaced. The cracks must be smoothed and filled with external grade fillers. The powdered surface should be brushed off before painting, and then sprayed or brushed with water to reduce suction.
Construction process	①Please stir "Onyx" thoroughly before use ②Apply the sealing primer evenly, and the bottom layer after painting should be completely waterproof ③Pan the batch again, and lightly sand with fine sandpaper after drying to level and remove dust ④The second batch at normal room temperature and polishing with a high-carbon scraper at the same time to obtain a reliable gloss ⑤ After 2 hours, repeat polishing from different directions with a high-carbon scraper to fix the surface gloss
Variety of textures	Recycle the slurry and use a special scraper for multiple polishing
Executive standard	This product is supervised by the laws of the United Kingdom and passed the certification standards of UKCA.
Cleaning method	Areas contaminated by fungus or algae growth should be treated with a special fungicide and then thoroughly cleaned. In bad circumstances, when the final effect of the wall cannot be changed, it should be re-constructed and a reliable effect can be obtained.
Technical Description	① Different batches of materials cannot be applied to the same wall. ②Color may vary from batch to batch*, and is only an approximation.
Precautions	① Please stir thoroughly before use. ②Pay attention to the critical point of the environment: construction is not allowed when the temperature is lower than 5°C and the relative humidity is higher than 85%. ③Please keep it out of reach of children.

COLOR SELECTION	REFERENCE DOSAGE	PREPARATION TOOLS
Many colors from the British Manntree "William Onyx" are available	2.5-3.5m2/kg/2 times	(provided by Harris Corporation for Manntree) Professional stainless steel batch knife
PRODUCT NET WEIGHT	SHELF LIFE	TECHNICAL SUPPORT
6kg/barrel (outer packaging is 5L packaging)	24 months	You can log on to Manntree's official website www.manntree.co.uk to get the latest information about this product.



Manntree®
— Paint My Love —



William Onyx
Favor of the british royal family



Manntree®
— Paint My Love —

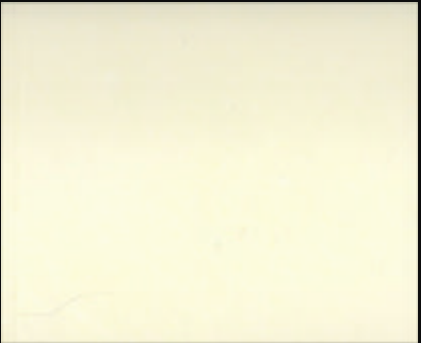


May - Based

William Onyx



May - 0668 (100g x 4)



May - 0668 (100g x 3)



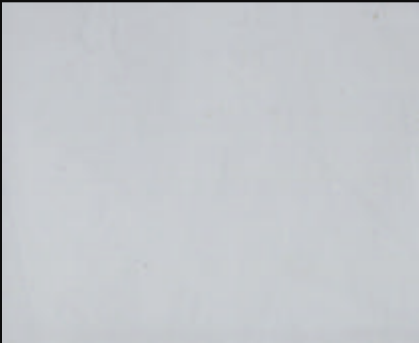
May - 0668 (100g x 2)



May - 0668 (100g)



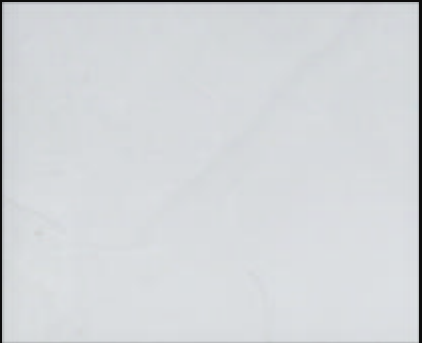
May - 0678 (100g x 4)



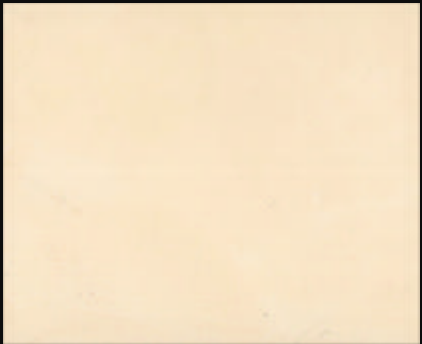
May - 0678 (100g x 3)



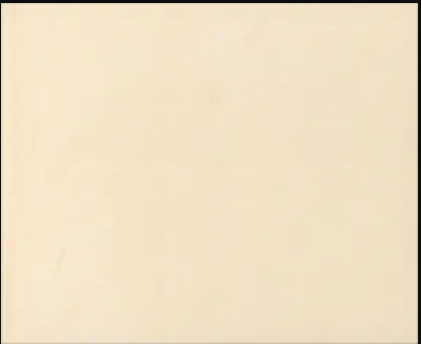
May - 0678 (100g x 2)



May - 0678 (100g)



May - 0670 (100g x 4)



May - 0670 (100g x 3)



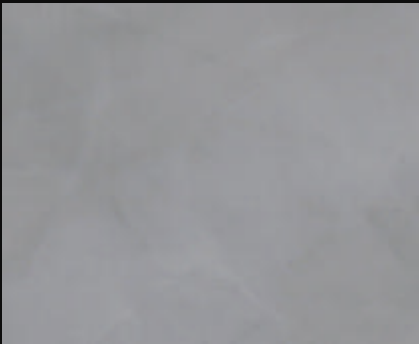
May - 0670 (100g x 2)



May - 0670 (100g)



May - 0682 (100g x 4)



May - 0682 (100g x 3)



May - 0682 (100g x 2)



May - 0682 (100g)



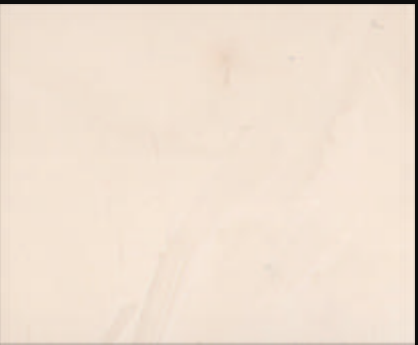
May - 0672 (100g x 4)



May - 0672 (100g x 3)



May - 0672 (100g x 2)



May - 0672 (100g)



May - M105 (100g x 4)



May - M105 (100g x 3)



May - M105 (100g x 2)



May - M105 (100g)



May - 0673 (100g x 4)



May - 0673 (100g x 3)



May - 0673 (100g x 2)



May - 0673 (100g)



May - M102 (100g x 4)



May - M102 (100g x 3)



May - M102 (100g x 2)



May - M102 (100g)



May - M98 (100g x 4)



May - M98 (100g x 3)



May - M98 (100g x 2)



May - M98 (100g)



May - M99 (100g x 4)



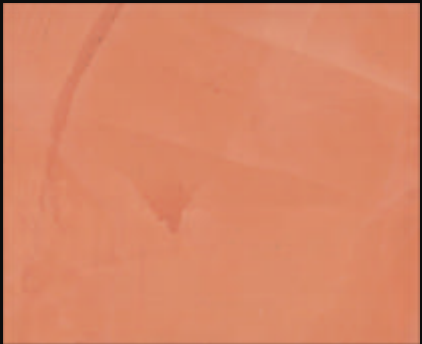
May - M99 (100g x 3)



May - M99 (100g x 2)



May - M99 (100g)



May - M96 (100g x 4)



May - M96 (100g x 3)



May - M96 (100g x 2)



May - M96 (100g)



May - M117 (100g x 6)



May - M117 (100g x 4)



May - M117 (100g x 2)



May - M117 (100g)



May - M94 (100g x 4)



May - M94 (100g x 3)



May - M94 (100g x 2)



May - M94 (100g)



May - M118 (100g x 4)



May - M118 (100g x 3)



May - M118 (100g x 2)



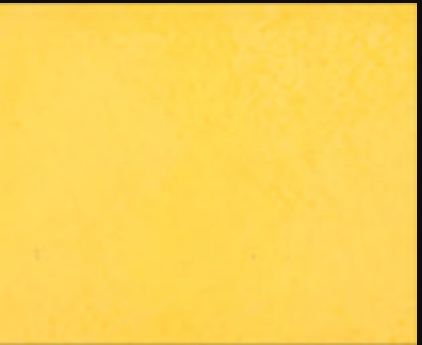
May - M118 (100g)



May - 0681 (100g x 4)



May - 0681 (100g x 3)



May - 0681 (100g x 2)



May - 0681 (100g)



May - M119 (100g x 4)



May - M119 (100g x 3)



May - M119 (100g x 2)



May - M119 (100g)

Manntree®
— Paint My Love—



In the UK, the products used by the royal family have a long history.



William Onyx

Favor of the british royal family



William Onyx

Favor of the british royal family



They are "Royal william" recog-
nized and awarded by the
British Royal Family. It has also
been appreciated by Prince
William. He has contributed to
the local natural heritage of



Favor of the British Royal Family

In the UK, the products used by the royal family have a long history.
Since the 20th century, it has been used in a large Queen Victoria Memorial in London, England. Its base is composed of 2,300 tons
of white marble. They are "Royal william" recognized and awarded by the British Royal Family. It has also been appreciated by
Prince William. He has contributed to the local natural heritage of London.